

Welcome to Maribo Dropzone and welcome to Faldskærsmklubben.dk

This is meant as a short guide to external parachute pilots to show how we normally operate on Maribo Dropzone (EKMB).

Upon arrival:

You are welcome to park wherever you want along the sides of the apron, but please park well clear of the grass taxiway intersection to the apron (marked by two red cones).

Fuel:

We got Avgas 100LL (tank no. 2) and Jet-A1 (tank no. 1).

Parachute operation:

Loading will take place at apron and there will be set up red markings to show the location of the loading area (usually by the western side of the apron).

Maribo Airfield is an uncontrolled radio field where we have parachute, powered flying and gliding. This makes it very important that you perform the appropriate radio calls to inform the surrounding traffic of your intentions. Do not expect answers when operating during weekends, but continue transmitting blind.

We are operation in airspace class G (GND-3500ft) and E (3500ft-FL195) this means, that you are not in need of a clearance and parachute drop is "on own discretion".

Radio 1 should be on the airfield frequency - "Maribo Radio" 130,575 MHz.

- On this freq. you report take off, **2 min prior to drop**, and base, final etc. Communication with manifest/ "Jump Leader" will also be on this freq.

Radio 2 should be on air traffic information service - "Copenhagen Information" 127,075 MHz.

- On this freq. you report airborne Maribo and climbing for FLXXX. They will give you a squawk code for the day. You should also give them a 2 min prior to drop call and they will keep you informed of other traffic around and below. **Please** remember to inform them on last load that parachute activity will soon end at Maribo Airfield. If you forget or for other reasons are not able to do this by radio, you can call Copenhagen Briefing (+45 32478272) and inform of end of activity in this way.

Landing area for parachute jumpers:

They plan landing on the blue marked area on the attached chart. Coordinates 54°41'53.55"N 11°26'28.19"E. This is also a way to keep spacing between activities, because the gliders will operate north of the runway and parachutist south of.

Noise abatement procedure:

Don't overfly the cities of Rødby and Holeby (marked by red on the chart attached). Spread the noise - do not climb and descend in the same patterns.

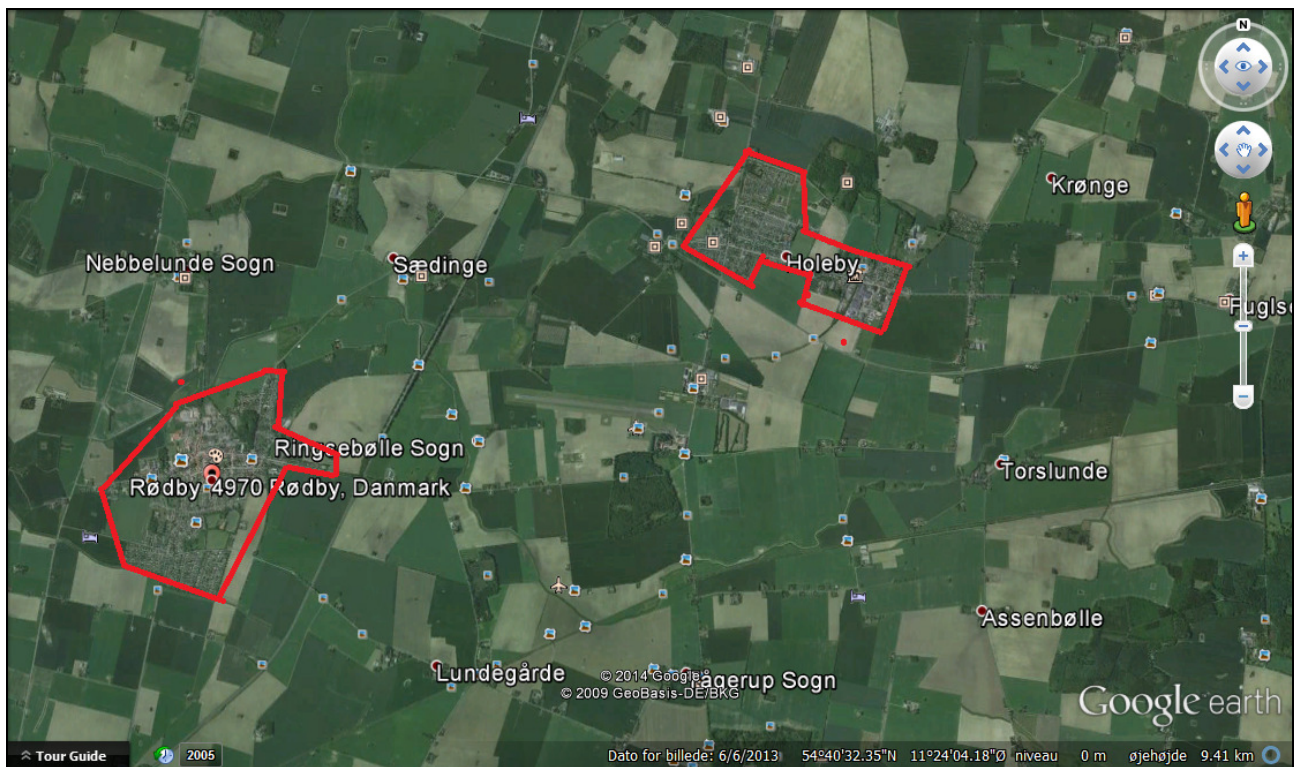
Enjoy your flying at Maribo Dropzone! /Rasmus Nielsen (pilot FDK).



Apron



Landing area



Don't overfly Rødby and Holeby.